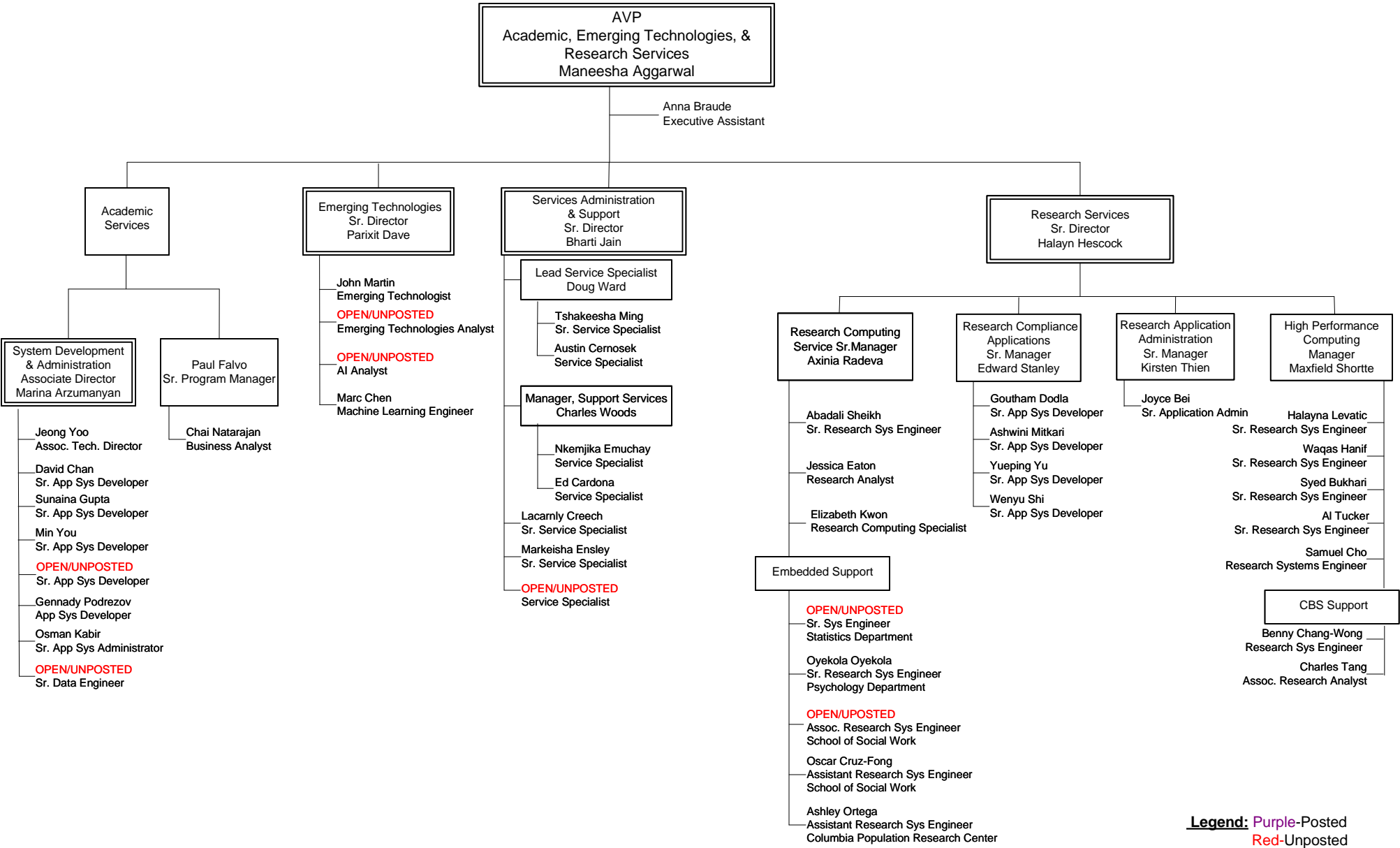




Group Summary

Number of Incumbents: 44  
Open/Posted: 0  
Open/Unposted: 7  
  
Total: 51

Academic, Emerging Technologies, & Research Services



## Group Summary

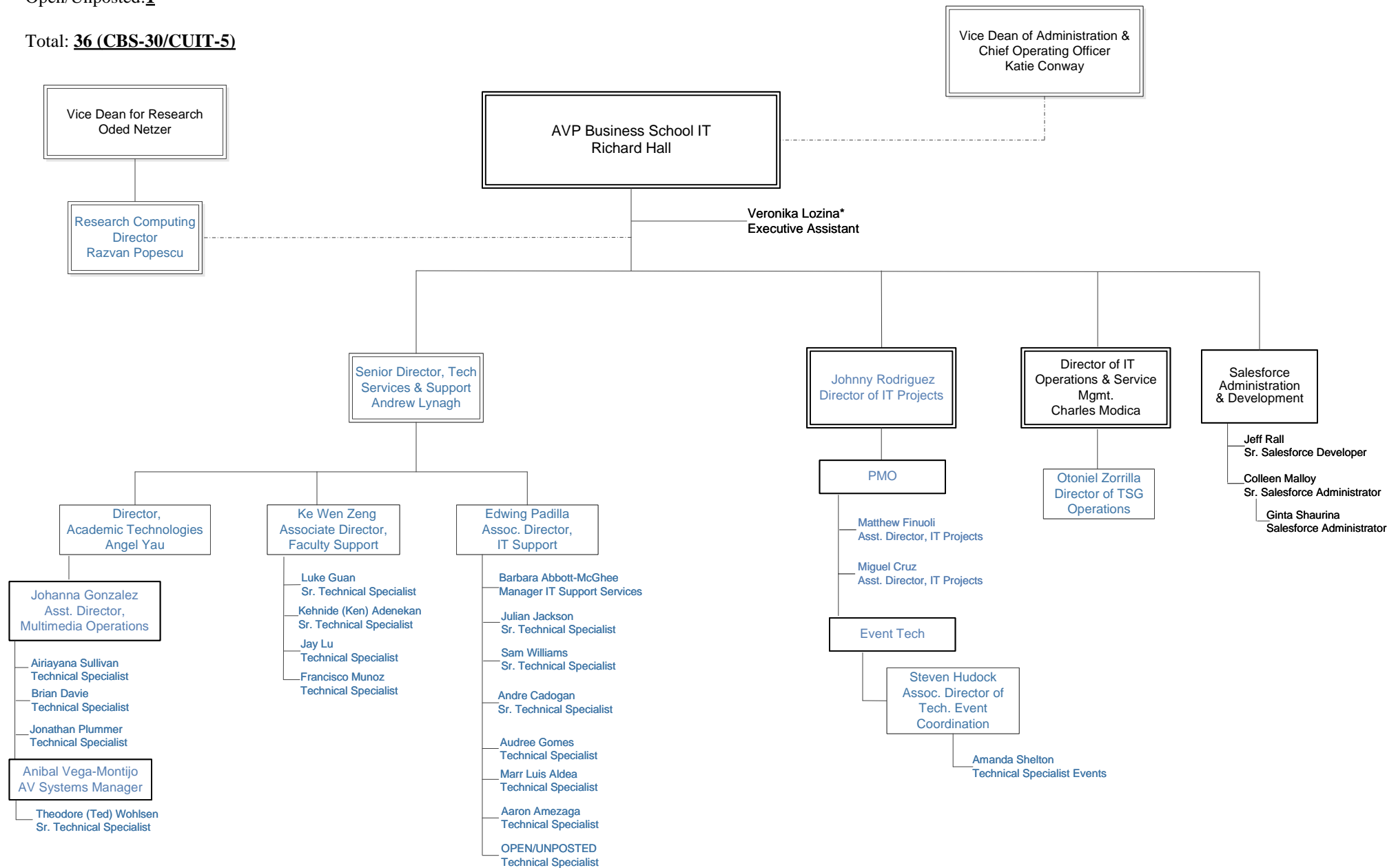
Number of Incumbents: **34**

Open/Posted: **1**

Open/Unposted: **1**

Total: **36 (CBS-30/CUIT-5)**

# Business School IT



## Group Summary

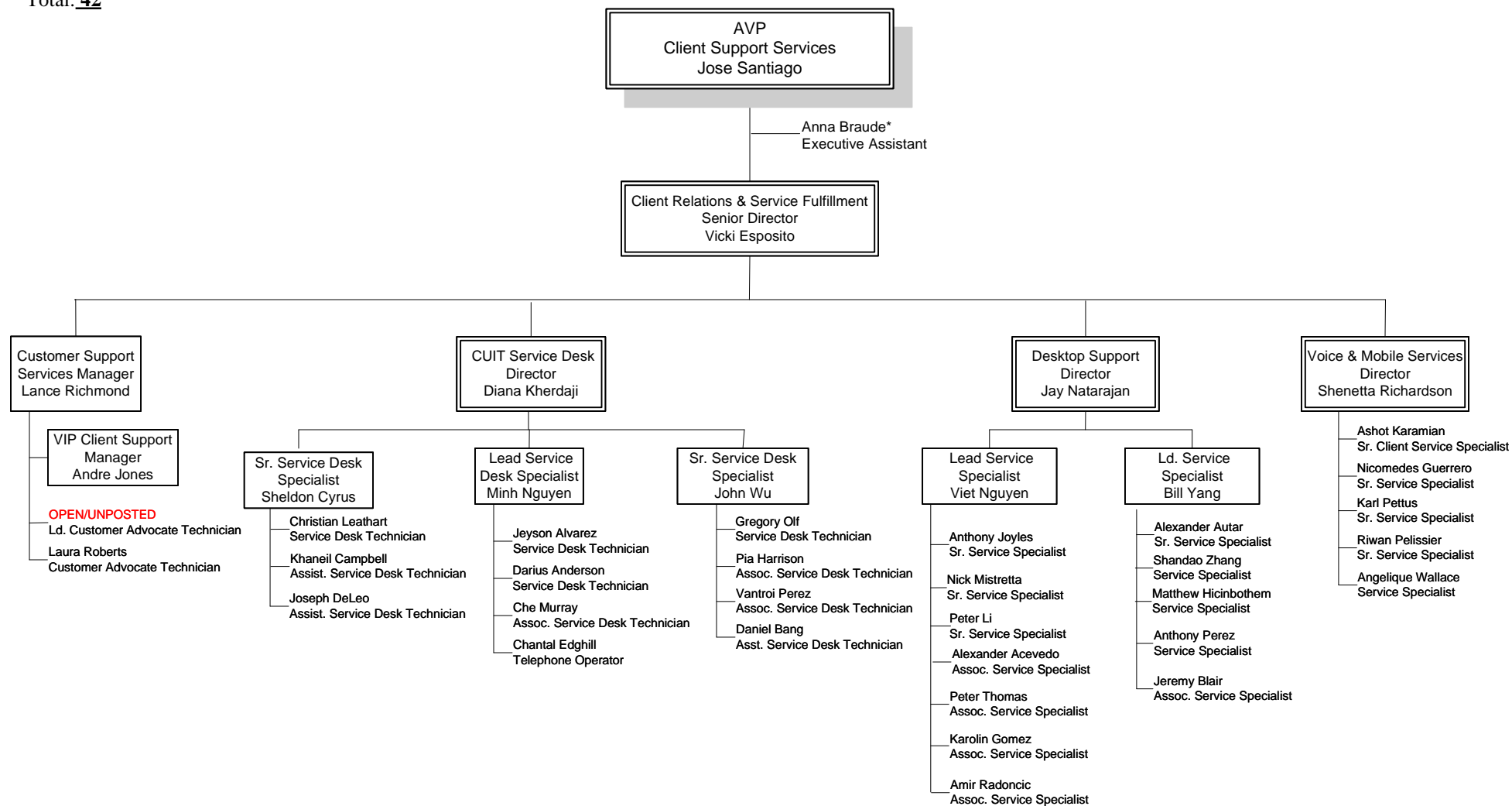
Number of Incumbents: **41**

Open/Posted: **0**

Open/Unposted: **1**

Total: **42**

# Client Support Services (i)



**Legend:** Purple-Posted  
Red-Unposted

## Group Summary

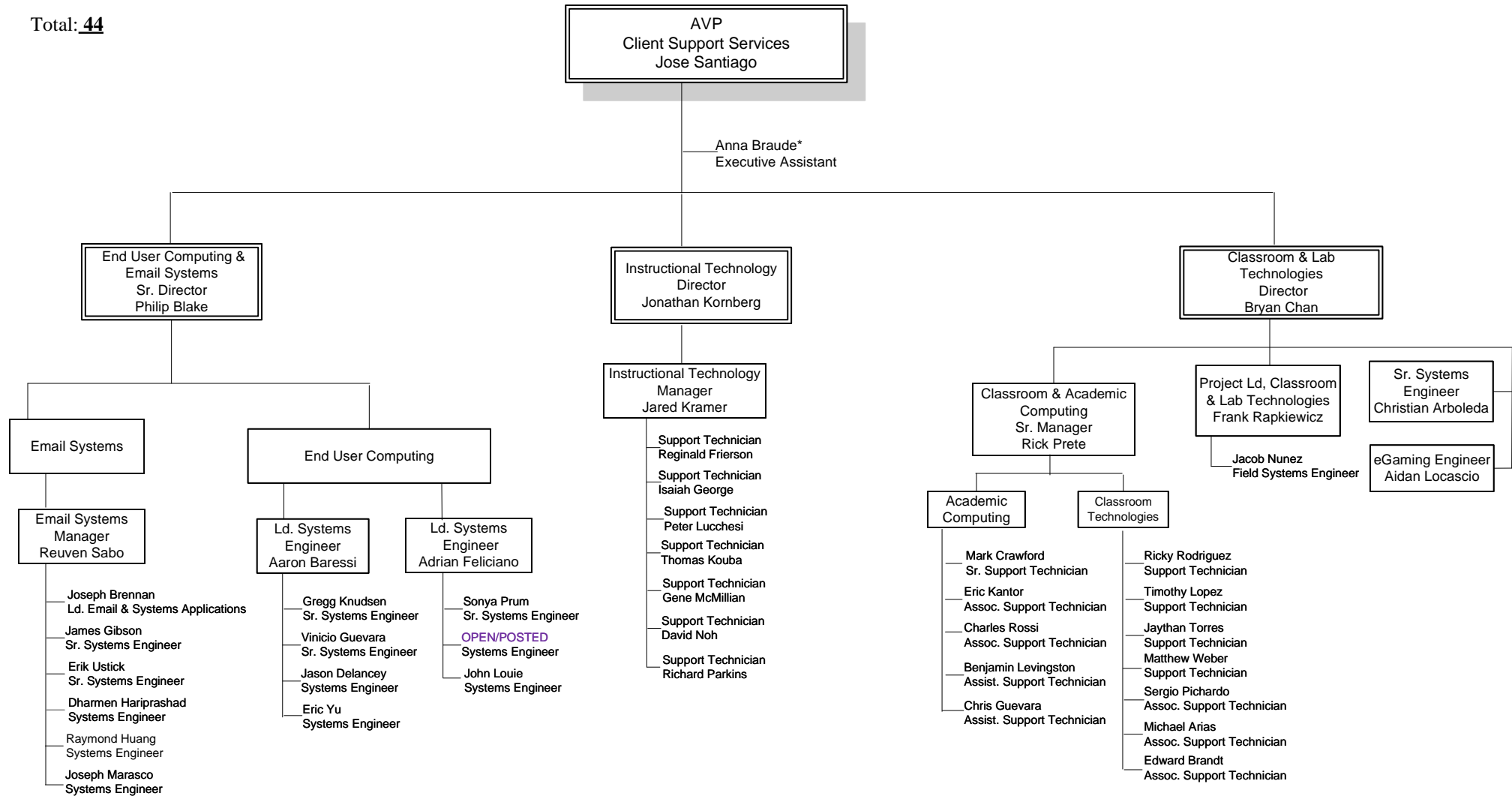
Number of Incumbents: 43

Open/Posted: 1

Open/Unposted: 0

Total: 44

## Client Support Services (ii)



Legend: Purple-Posted  
Red-Unposted

Group Summary

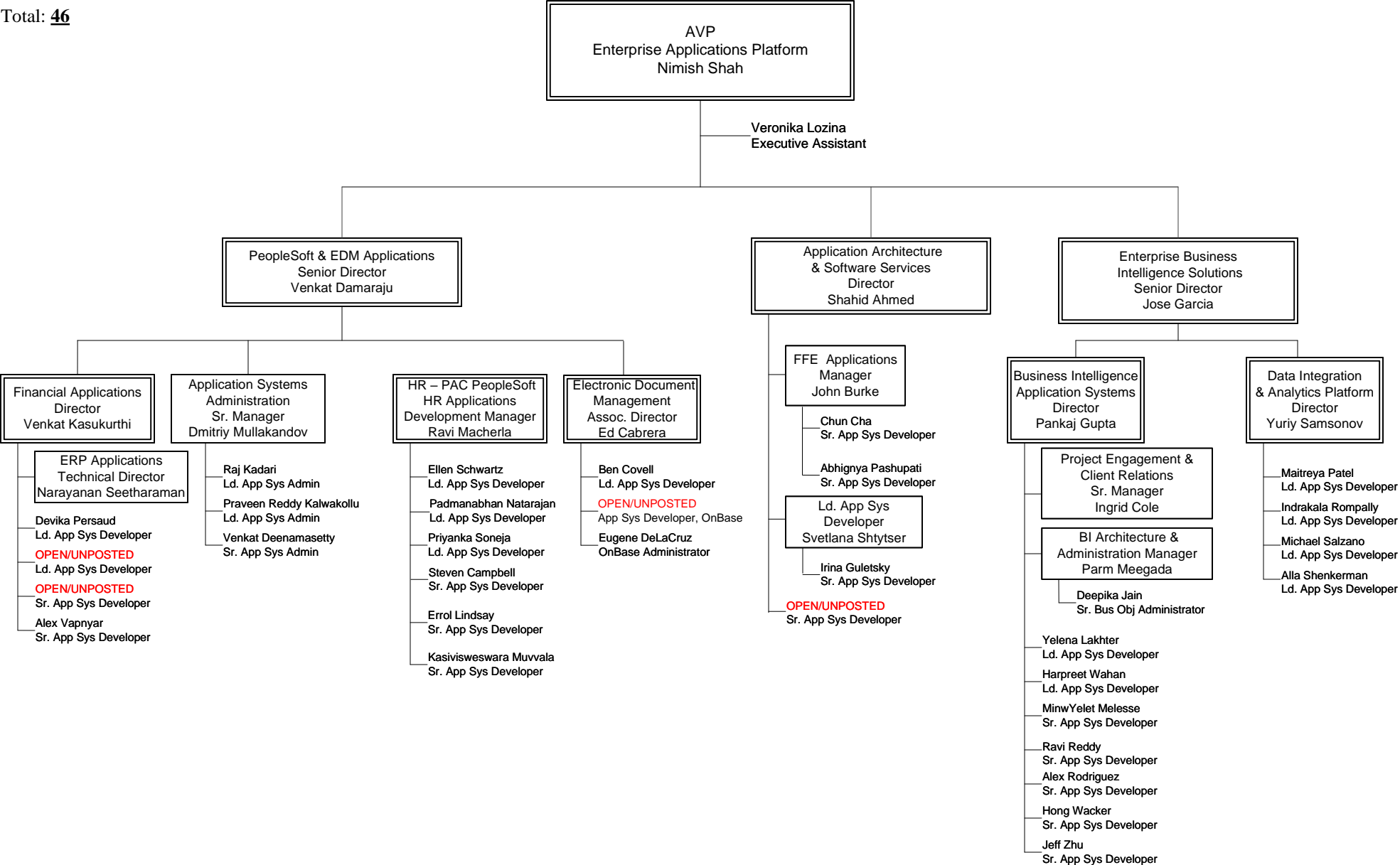
Number of Incumbents:42

Open/Posted: 0

Open/Unposted: 4

Total: 46

Enterprise Applications Platform (i)



Legend: Purple-Posted  
Red-Unposted

Group Summary

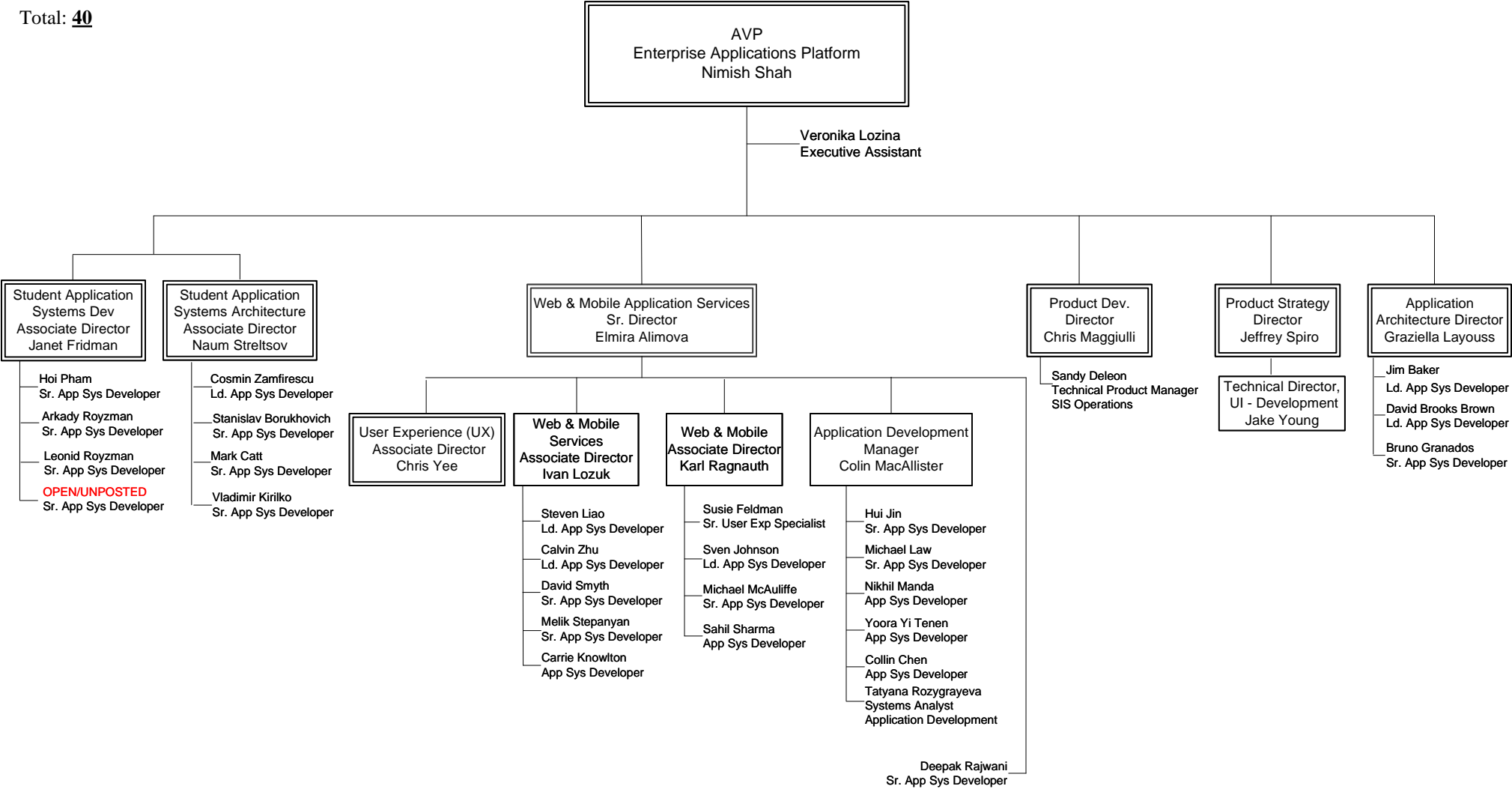
Number of Incumbents: 39

Open/Posted: 0

Open/Unposted: 1

Total: 40

Enterprise Applications Platform (ii)



Legend: Purple-Posted  
Red-Unposted

**Group Summary**

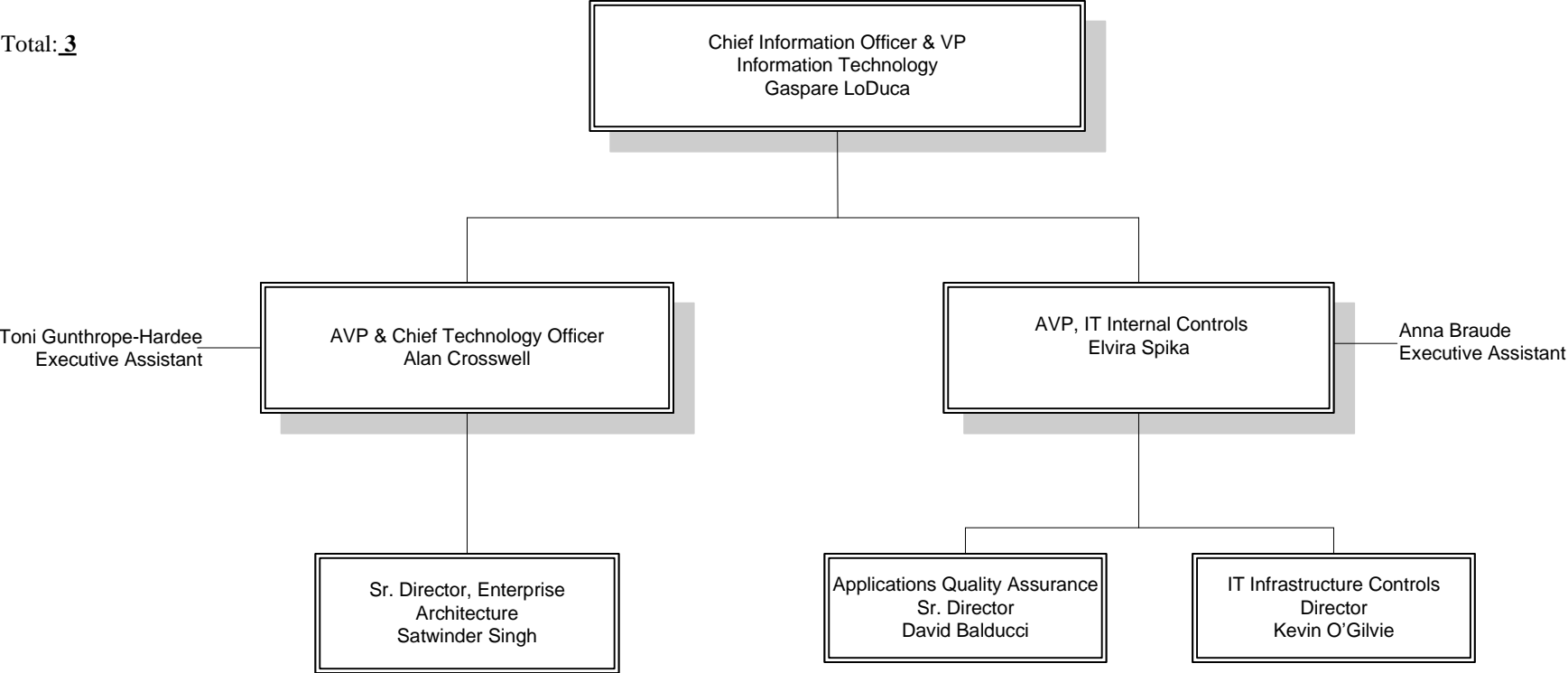
Number of Incumbents:**3**

Open/Posted: **0**

Open/Unposted:**0**

Total: **3**

*Enterprise Architecture  
& IT Internal Controls*





# Infrastructure Services

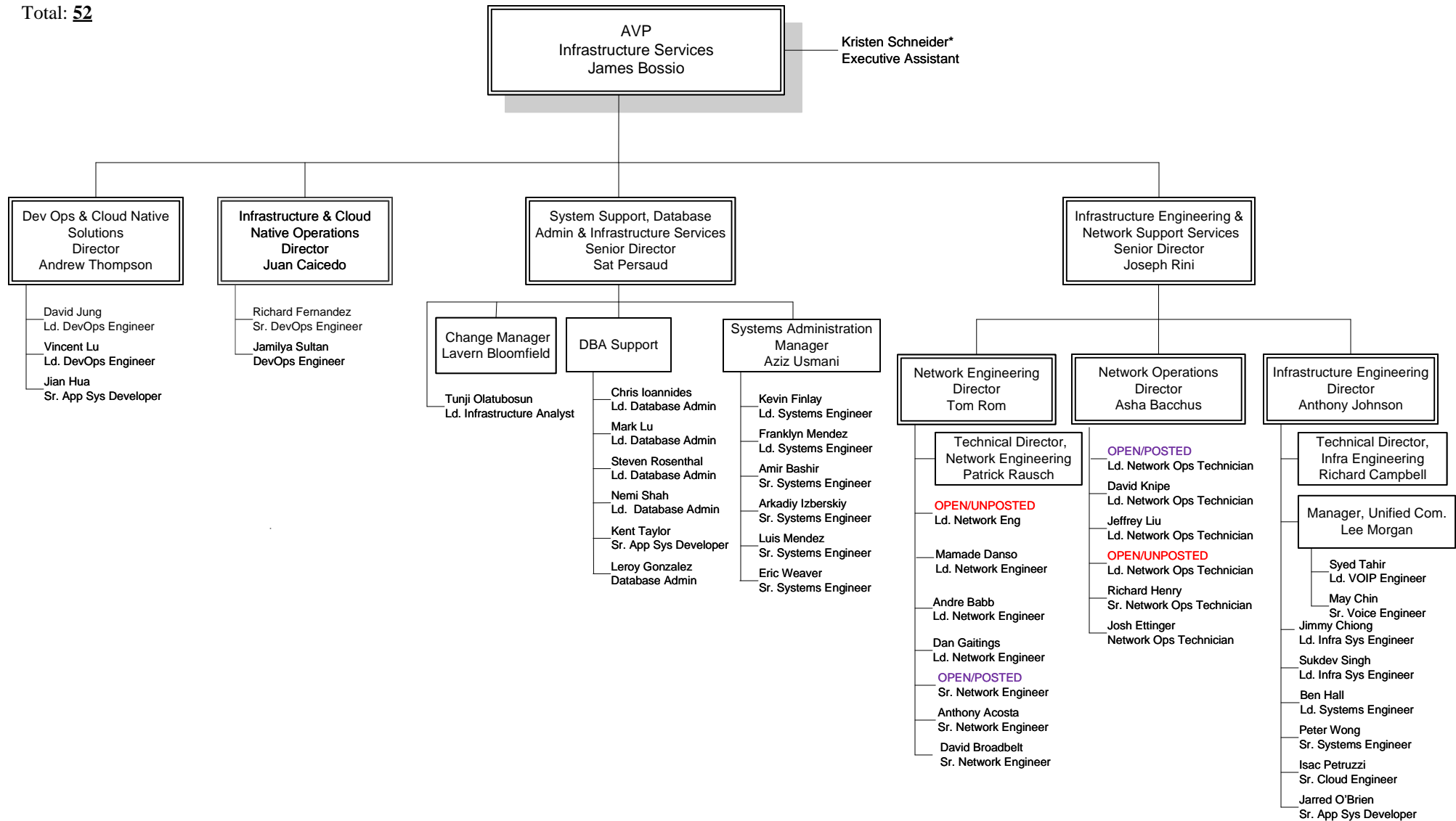
## Group Summary

Number of Incumbents: 47

Open/Posted: 2

Open/Unposted: 2

Total: 52



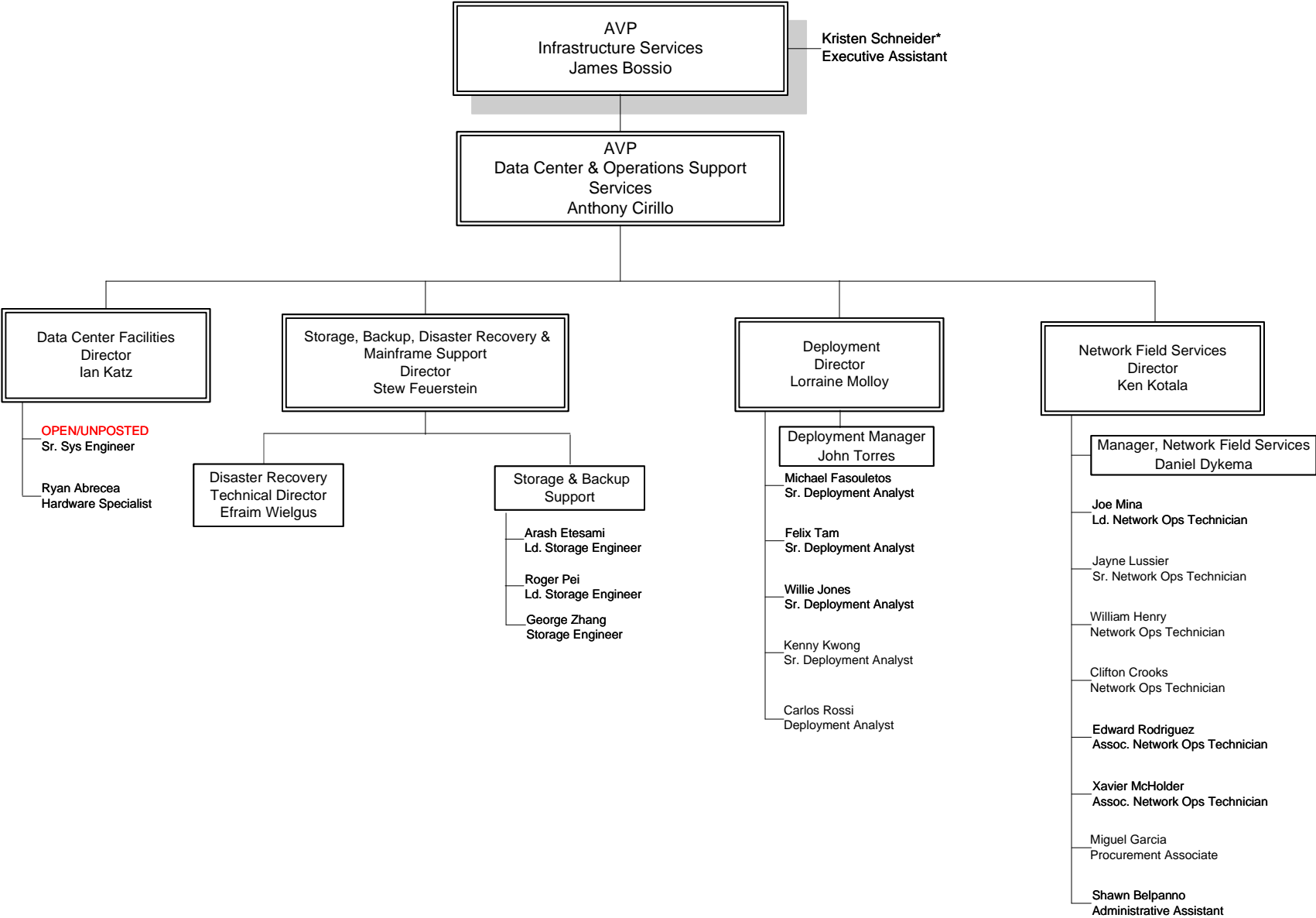
**Legend:** Purple-Posted  
Red-Unposted

Group Summary

Number of Incumbents:25  
Open/Posted: 0  
Open/Unposted: 1

Total: 26

Infrastructure Services II

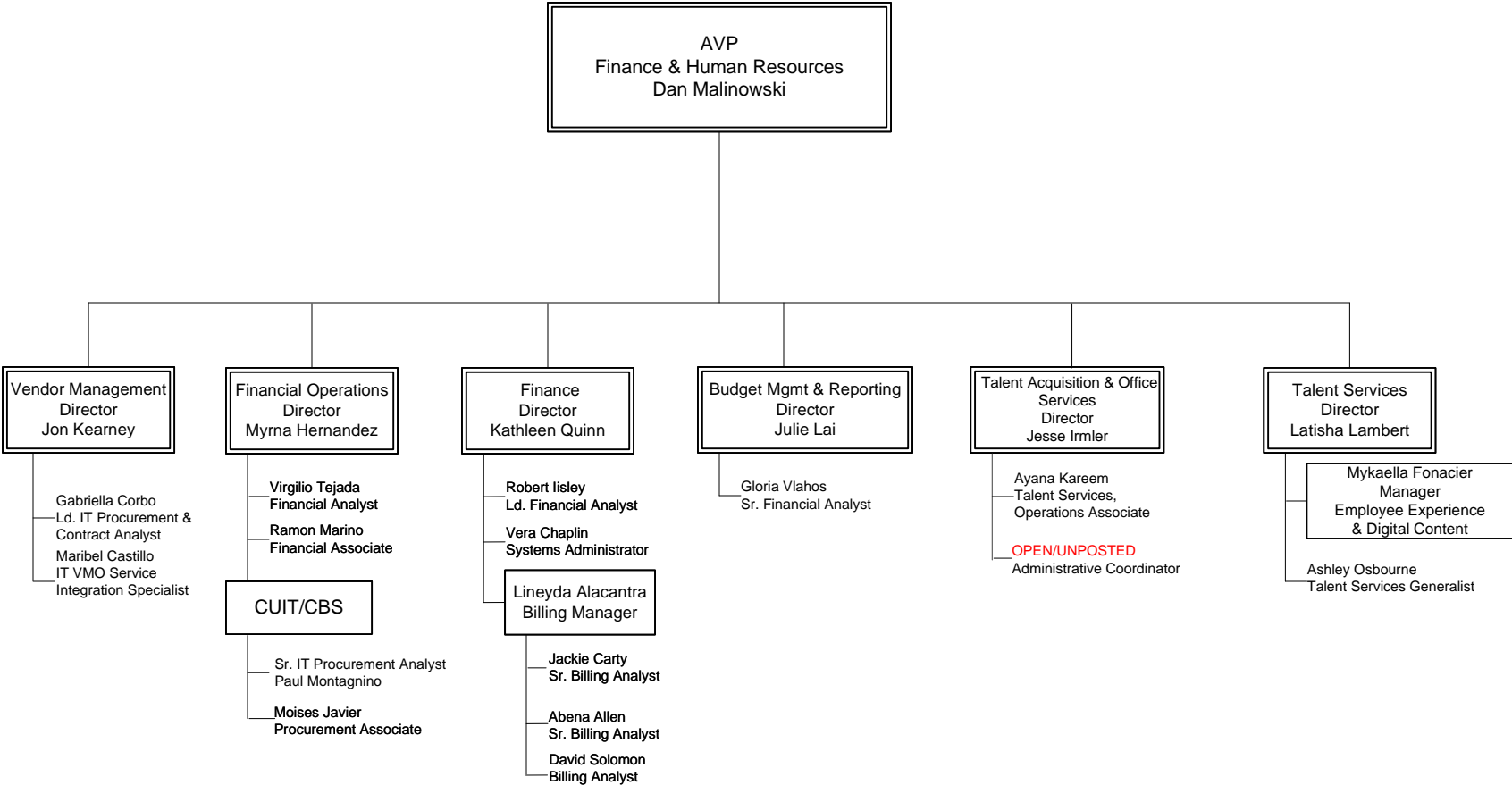


Legend: Purple-Posted  
Red-Unposted

**Group Summary**

Number of Incumbents: 20  
Number of CUIT/CBS Incumbents: 2  
Open/Posted: 0  
Open/Unposted: 1  
  
Total: 23

*IT Business Services*

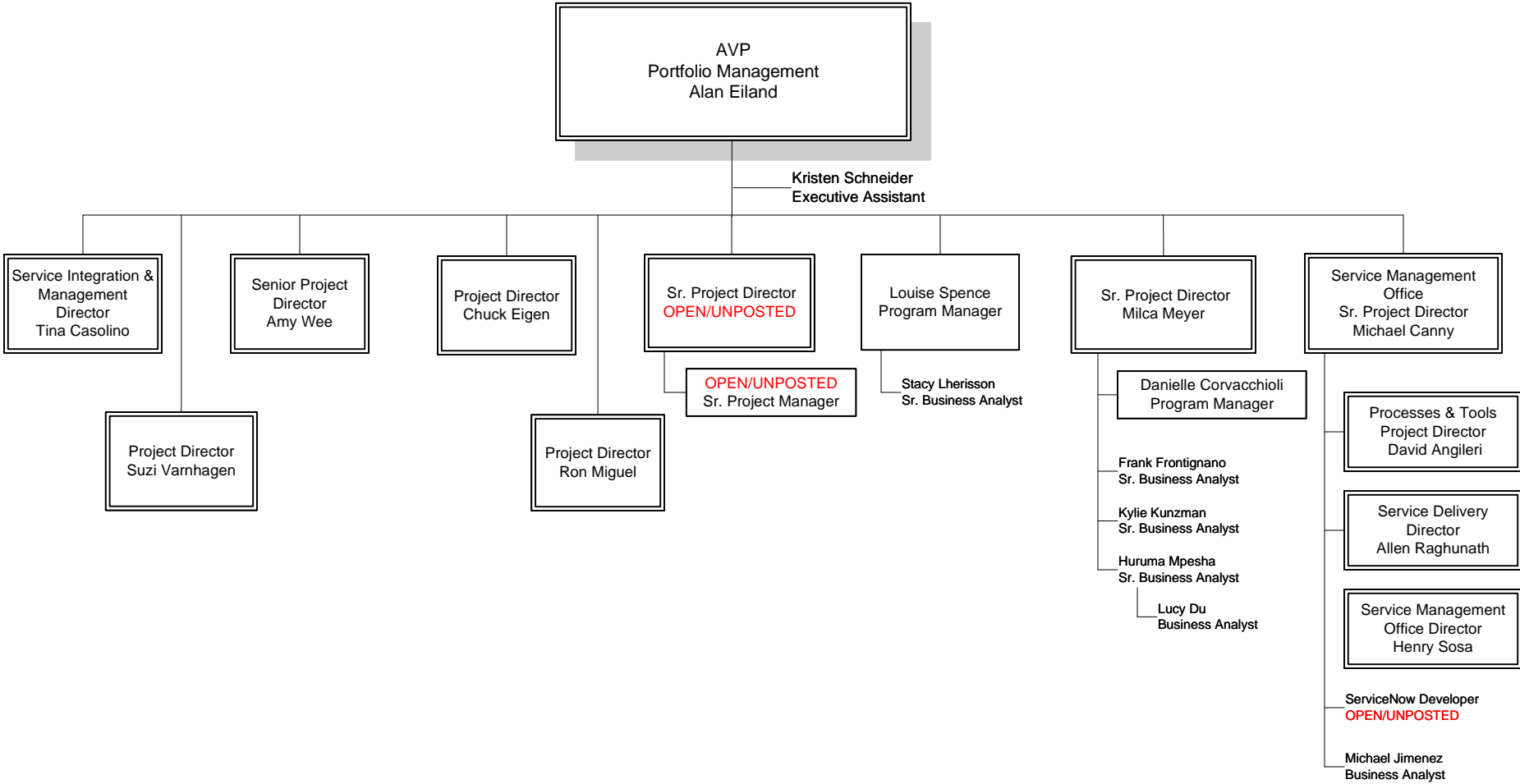


**Legend:** Purple-Posted  
Red-Unposted

Group Summary

Number of Incumbents:19  
Open/Posted: 0  
Open/Unposted: 3  
  
Total: 21

Portfolio Management



## Group Summary

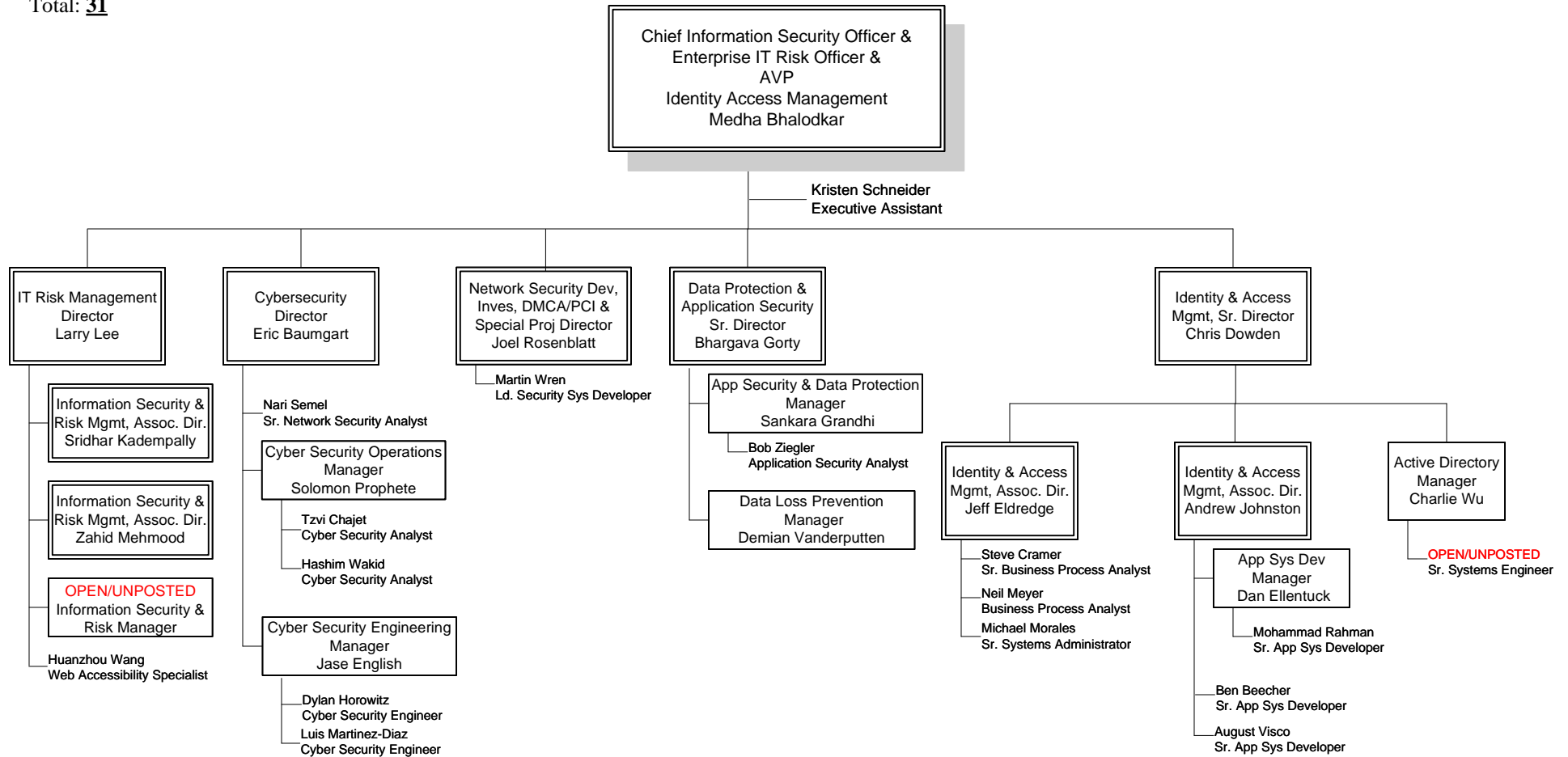
Number of Incumbents: 29

Open/Posted: 0

Open/Unposted: 2

Total: 31

# Security and Identity & Access Mgmt.



**Legend:** Purple-Posted  
Red-Unposted